

## **078100M** Moto Guzzi Stelvio 2023> / V100 Mandello 2022> Fitting Instructions

### Kit Includes:

1.	X1	C078100M	Hugger Blade
2.	X1	CFK078100A	Mounting Bracket 'A'
3.	X1	CFK078100B	Mounting Bracket 'B'
4.	X1	CBOLM50005	M5 x 12mm Button-Head Bolt
5.	X2	CBOLM50009	M5 x 20mm Flanged Button-Head Bolt
6.	X3	CBOLM60036	M6 x 20mm Flanged Button-Head Bolt
7.	X1	CWASM50002	M5 Stainless Steel Washer
8.	X3	CWASM60001	M6 Stainless Steel Washer
9.	X3	CNUTM60003	M6 Nyloc Nut
10.	X1	CSPAM60003	M6 x 4mm Spacer
11.	X5	CGROM60001	Rubber Grommet
12.	X2	CSPAM50006	M5 x 8mm Spacer
13.	X3	CSPAM60004	M6 x 8mm Spacer
14.	X2	CCAP0003	M5 Bolt Cap

### Assembly Instructions

- Begin by fitting all rubber grommets (**Item 11**) into the large diameter holes. Using '**FIG. 2**' & '**FIG. 3**' for reference, insert the M5 & M6 x 8mm spacers (**Items 12 & 13**) into their relevant grommets.
- Loosely fasten bracket 'A' (**Item 2**) to the Pyramid Hugger blade (**Item 1**). Use 2 x M6 nuts, bolt and washer (**Items 9, 6, 8** respectively). Please use '**FIG. 2**' for reference.
- Unclip the brake hose line and remove the OEM hugger from the motorcycle. Locate the Pyramid Hugger and the bracket in position, **loosely threading** the M5 x 12mm bolt (**Item 4**) and M5 washer (**Item 7**), followed by 1 x M5 x 20mm bolt (**Item 5**) to locate the secondary mounting of the bracket.
- Proceed to fit bracket 'B' (**Item 3**) to the motorcycle and to the Hugger. Use 1 x M5 x 20mm bolt (**Item 6**) and the M6 x 4mm spacer (**Item 10**) in the orientation shown to fix the Hugger to the motorcycle. Place the spacer between the Hugger and the bracket. Using 1 x M6 nut, bolt and washer (**Items 9, 6, 8** respectively), **loosely fix** bracket 'B' to the Hugger blade.
- Fully tighten all fixings, starting with the bolts that thread into the swingarm of the motorcycle and ending with the M6 fixings for the Hugger to bracket connections.
- Place both M5 bolt caps (**Item 14**) over the M5 bolts illustrated in '**FIG. 3**'.
- **Refit the brake hose line** by clipping the anchor points into the holes marked in '**FIG. 3**'.
- The installation of your Pyramid Hugger is now complete.

#### Please Note:

We advise that all fixings are checked periodically.

Any questions?  
[sales@pyramidmoto.co.uk](mailto:sales@pyramidmoto.co.uk)  
 +44 (0)1427 677990  
[www.pyramidmoto.co.uk](http://www.pyramidmoto.co.uk)



Follow us on social media and feel free to leave us a review!

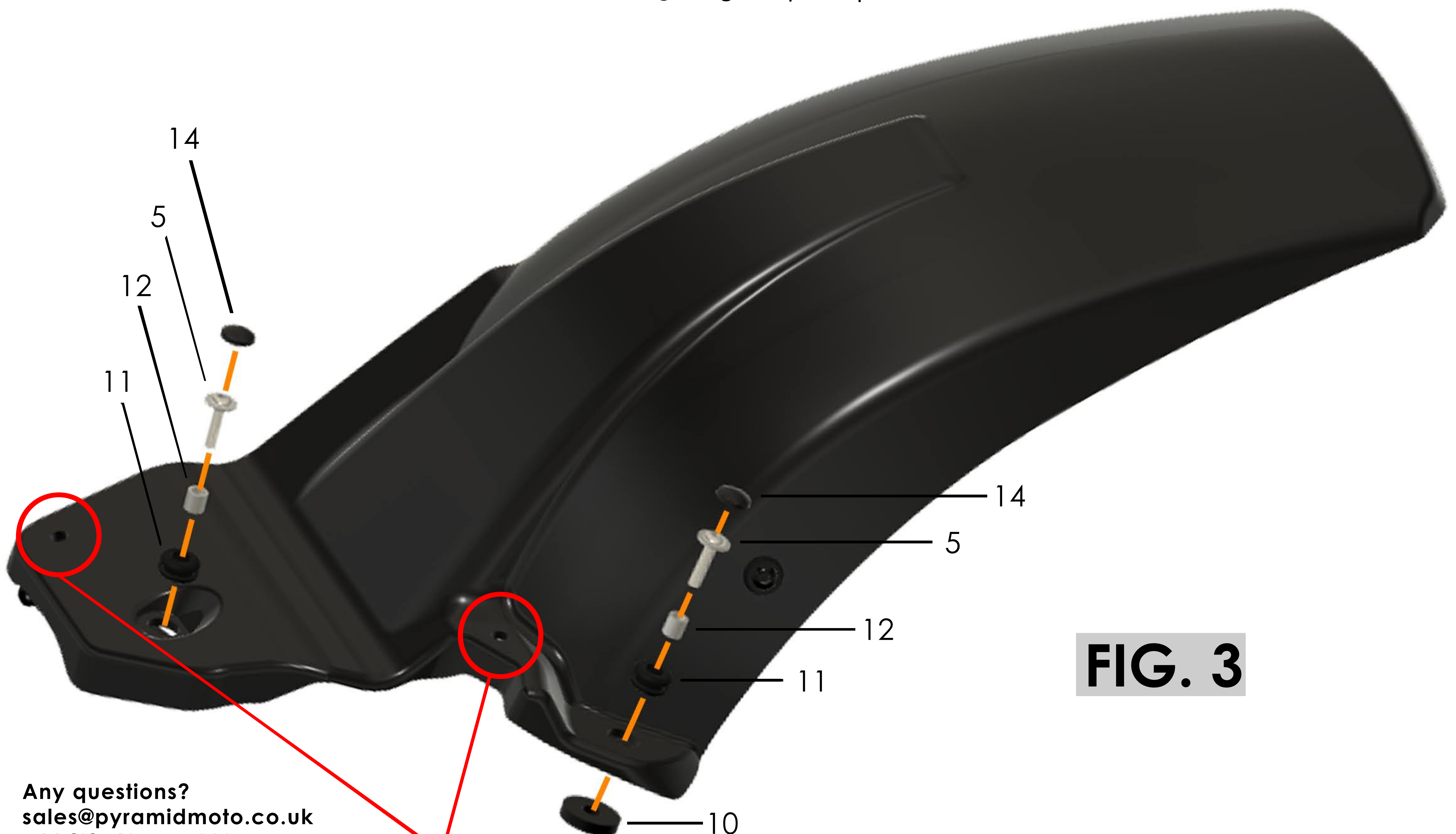
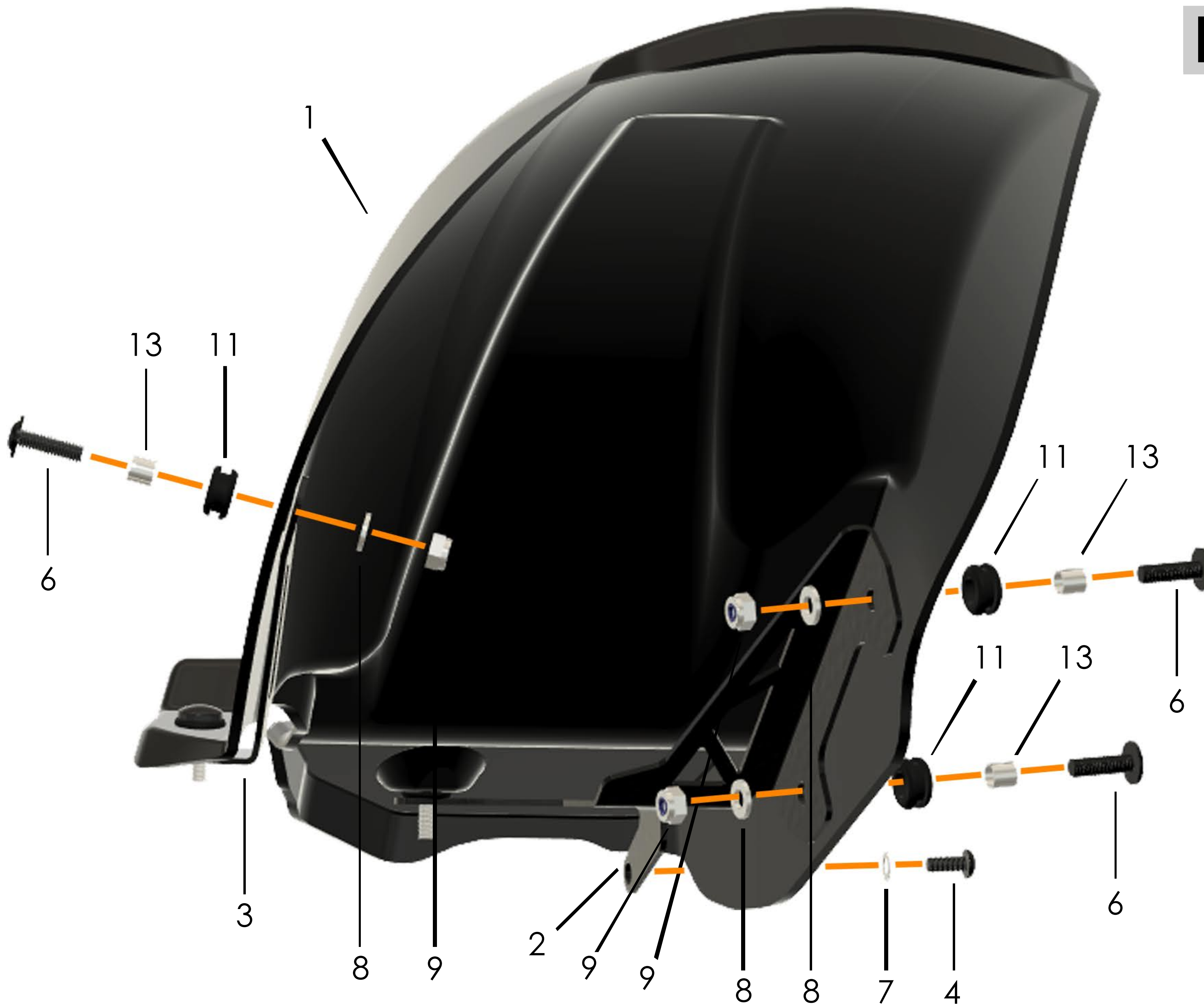
**FIG. 1**



## **078100M** Moto Guzzi Stelvio 2023> / V100 Mandello 2022> Fitting Instructions

The images shown below will assist with the identification of the components included in the fitting kit, together with their application.

**FIG. 2**



**FIG. 3**

Any questions?  
[sales@pyramidmoto.co.uk](mailto:sales@pyramidmoto.co.uk)  
 +44 (0)1427 677990  
[www.pyramidmoto.co.uk](http://www.pyramidmoto.co.uk)



Follow us on social media and  
 feel free to leave us a review!

Holes to anchor brake hose clips